



# DIY TOY CUBBY SHELF

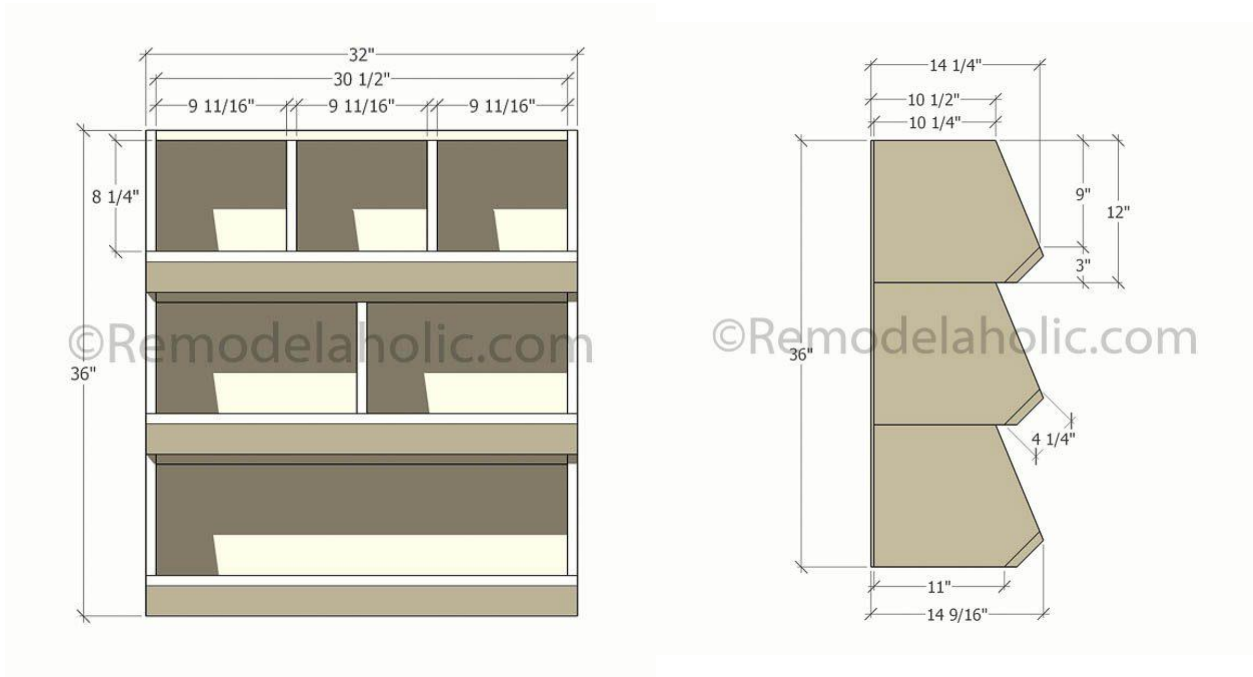
REMODEL *aholic*

courtesy of Remodelaholic.com

Designed by The Tale of an Ugly House // Building Plans by Remodelaholic.com

Find the original tutorial and more details at <http://www.remodelaholic.com/build-toy-storage-cubby-shelf-boys-room-makeover/>

These instructions are provided for entertainment purposes only. Please consult a professional if you are attempting any projects of which you are unsure. Take all safety precautions when using power tools or other dangerous objects and read the instruction manuals before using any device of which you are unsure. Remodelaholic is not responsible for any injury or damage sustained while attempting to duplicate projects or tutorials. **All projects are done at your own risk.**

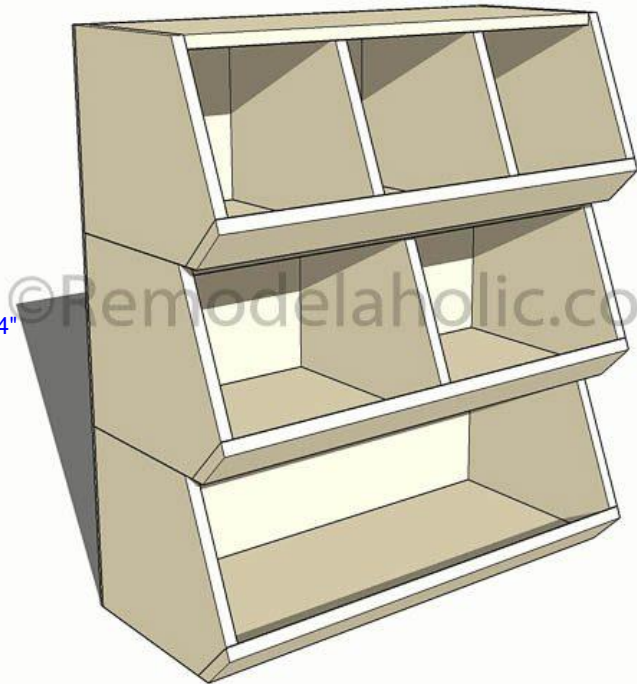


## TOOLS

- Table saw
- Miter saw
- Kreg Jig
- Nail gun
- Drill, Sander

## MATERIALS

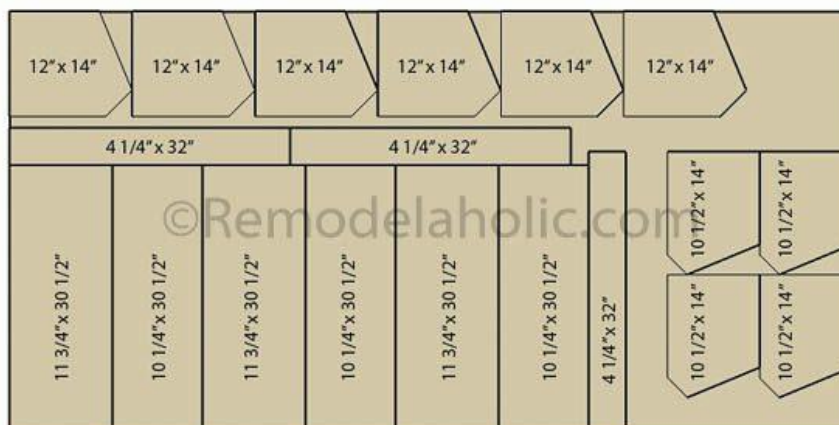
- (2) 4'x8' –  $\frac{3}{4}$ " Sheet of plywood 1 Sheet  $\frac{3}{4}$ "
- (1) 4'x8' –  $\frac{1}{4}$ " Sheet of plywood
- 1  $\frac{1}{2}$ " pocket hole screws
- 1  $\frac{1}{4}$ " Pocket hole screws
- Wood glue
- Sand paper
- Brad nails
- Paint/Primer or Stain of choice



## CUT LIST

*Suggested cutting guide; always measure and verify as you go. Lumber width dimensions may vary.*

- (3) 30  $\frac{1}{2}$ " x 10  $\frac{1}{2}$ " x  $\frac{3}{4}$ " – Tops
- (3) 30  $\frac{1}{2}$ " x 11  $\frac{3}{4}$ " x  $\frac{3}{4}$ " – Bottoms
- (6) 14  $\frac{1}{4}$ " x 12" x  $\frac{3}{4}$ " – Sides
- (3) 32" x 4  $\frac{1}{4}$ " x  $\frac{3}{4}$ " – Fronts (one long mitered at 22.5 deg. Angle and the other at 45 deg.)
- (3) 14  $\frac{1}{4}$ " x 10  $\frac{1}{2}$ " x  $\frac{3}{4}$ " – Dividers
- (1) 36" x 32" x  $\frac{1}{4}$ " – Back



**STEP 1:** Use a table saw to cut out the larger pieces and the miter saw for the sides/dividers. Using the table saw cut a 45-degree angle along the bottom side of the bottom piece (11 ¾" x 30 ½") and cut a 45 degree angle along the bottom side of the ledge piece so that they align and are flush. Make all your pocket holes on the bottom sides of the top and bottom pieces.



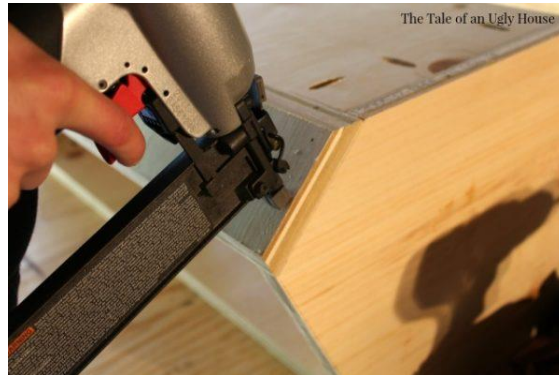
**STEP 2:** Apply some glue and screw in the bottom piece (11 ¾" x 30 1/3" to each side using 1 ¼" pocket hole screws.



Attach the top (10 ¼" x 30 ½") the same way.



**STEP 3:** Attach the front piece to the bottom, making sure each edge is flush. We used 1 ½" pocket hole screws. We also added a couple brad nails on the edges.



Your first box is done! Repeat 2 more times.

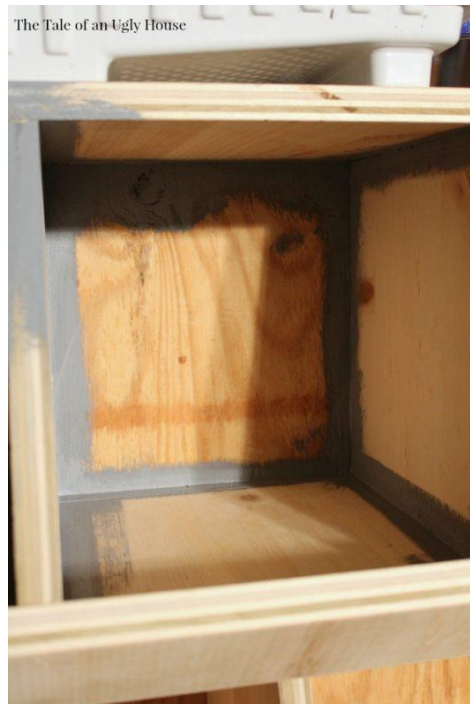


**STEP 4:** Next, we put our dividers in place and nailed them in. Make sure to measure that each cubby is the same width. We left the bottom shelf open, one divider in the second shelf and two dividers in the third shelf.



Once each box is finished, you can stack them! We cut a sheet of plywood to the correct size and screwed it onto the back. This will hold each shelf in place.

**STEP 5:** If desired, paint the cubby (you could also stain it). I chose a paint color called Serious Gray by Sherwin Williams.



Let it dry overnight and move it into place the following day. Enjoy your three-shelf toy cubby for only \$55!



**Finished! Send us a picture @Remodelaholic or tag #imaremodelaholic on Facebook and Instagram.**